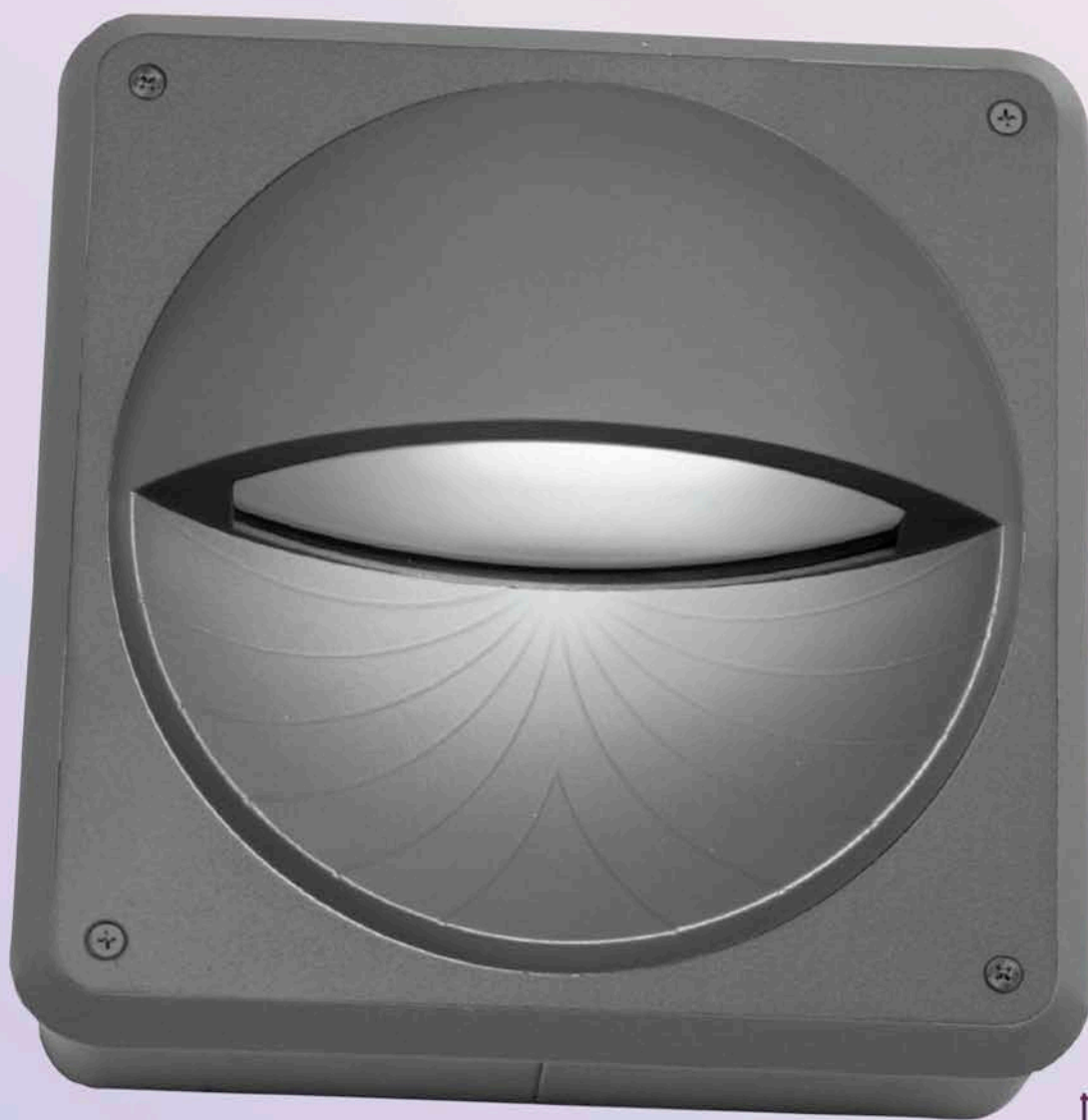


# 900AL Series

**ELCAST**  
LIGHTING





# 900AL SERIES

Catalog Number	
Project/Location	Type
Approved By	

## LED, HID, CFL ARCHITECTURAL LOW LEVEL SURFACE & RECESSED WALL MOUNT

### HOUSING

Heavy-duty, corrosion resistant die cast aluminum. Provided with 1-3/4 KO.

### FACEPLATE

Heavy-duty, corrosion resistant, one-piece die cast aluminum. Secured to housing with four stainless steel tamper proof screws. Provides glare-free light distribution.

### LENS

1/8" thick impact resistant frosted glass.

### GASKET

Closed cell silicone foam gasket seals out moisture, dust, and insects for weather-tight operation.

### BALLAST

CF: integral electronic high power factor  
 HID: electronic thermally protected or magnetic  
 LED: solid state electronic driver 120/277

### SOCKET

CF: four pin plug in type  
 HID: 4KV pulse rated medium base

### FINISH/COLOR

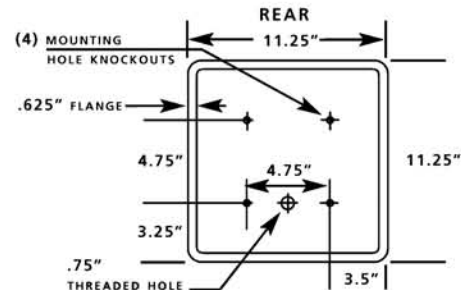
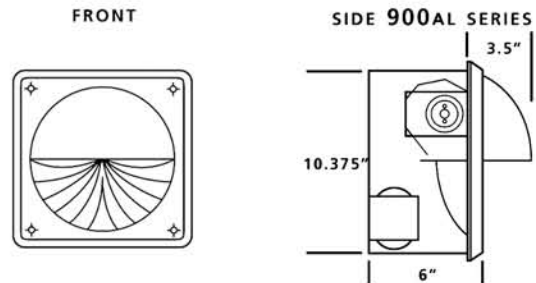
Polyester powder coat over zinc based primer. Available in matte black (MB), matte bronze (BZ), matte white (MW), silver gray (SG), or custom color (CC).

### OPTIONS

F1 single fuse  
 PC photo cell (surface mount only)  
 ETR emergency ballast remote  
 ETI emergency ballast integral  
 ET extreme temperature ballast  
 PL polycarbonate lens  
 CF color filters (CFL and LED only)  
 A amber LED (turtle friendly)  
 B blue LED  
 G green LED  
 R red LED

ETL listed suitable for wet location. Conforms to UL Standard 1598.

Series	Lamp	Wattage/MAX
900AL	PLT	42W
	MH/HPS	100W
	LED	8W



### Ordering Example

900AL R OR S 42PLT 120 MB TP

Specifications are subject to change without notice. Consult factory for verification.

## ELCAST LIGHTING

815 S KAY AVE ADDISON, IL 60101 USA  
 630.543.5390 • FAX: 630.543.5392  
[elcastltg@elcastltg.com](mailto:elcastltg@elcastltg.com) • [www.elcastltg.com](http://www.elcastltg.com)