

# 900 Series

**ELCAST**  
LIGHTING



# 900 SERIES

**LED, CFL ARCHITECTURAL LOW LEVEL SURFACE & RECESSED WALL MOUNT**

Catalog Number	
Project/Location	Type
Approved By	

## HOUSING

Heavy-duty, corrosion resistant die cast aluminum. Provided with 1-3/4 KO.

## FACEPLATE

Heavy-duty, corrosion resistant one-piece die cast aluminum. Secured to housing with four stainless steel tamper proof screws. Provides glare-free light distribution.

## LENS

1/8" thick impact resistant frosted glass.

## GASKET

Closed cell silicone foam gasket. Seals out moisture, dust, and insects for weather-tight operation.

## BALLAST

CF: integral electronic high power factor  
LED: solid state electronic driver

## SOCKET

CF: four pin plug in type

## FINISH/COLOR

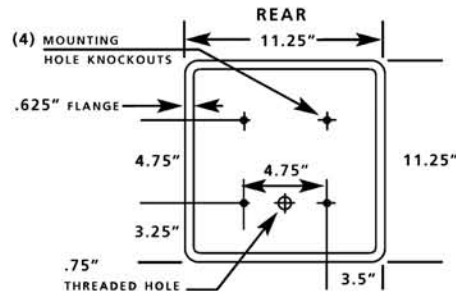
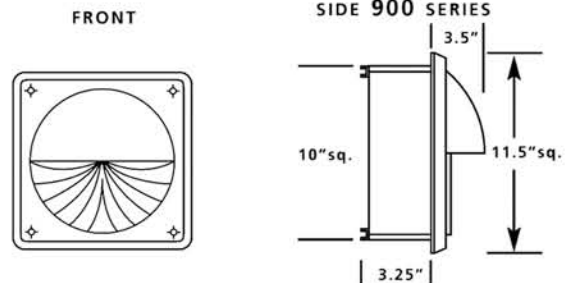
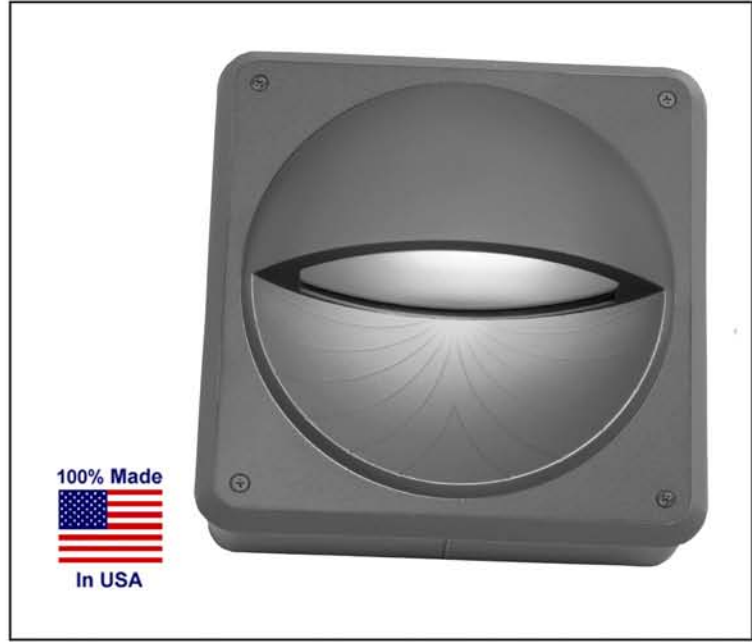
Polyester powder coat over zinc based primer. Available in matte black (MB), matte bronze (BZ), matte white (MW), silver gray (SG), or custom color (CC).

## OPTIONS

- F1 single fuse
- PC photo cell (surface mount only)
- ETR emergency ballast remote only
- PL polycarbonate lens
- S surface mount box
- CF color filters
- A amber LED (turtle friendly)
- B blue LED
- G green LED
- R red LED

ETL listed suitable for wet location.  
Conforms to UL Standard 1598.

Series	Lamp	Wattage/MAX
900	PLT LED	42W 8W



## Ordering Example

900 R OR S 42PLT 120 MB TP

Specifications are subject to change without notice. Consult factory for verification.

## ELCAST LIGHTING

815 S KAY AVE ADDISON, IL 60101 USA  
630.543.5390 • FAX: 630.543.5392  
[elcastltg@elcastltg.com](mailto:elcastltg@elcastltg.com) • [www.elcastltg.com](http://www.elcastltg.com)