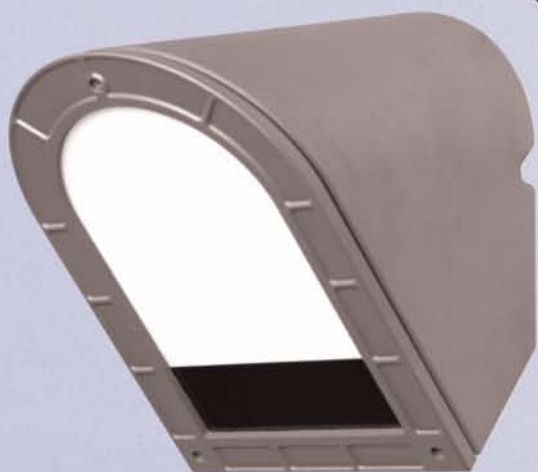


# 500 Series

**ELCAST**  
LIGHTING





# 500 SERIES

Catalog Number	
Project/Location	Type
Approved By	

## LED, HID, CFL ARCHITECTURAL WALL MOUNT

### HOUSING

Heavy-duty, corrosion resistant die cast aluminum.

### LENS

Tempered 1/8" thick translucent glass lens retained with die cast aluminum door frame. Secured to housing with tamper resistant stainless steel hardware.

### GASKET

Closed cell silicone foam gasket. Seals out moisture, dust, and insects for weather-tight operation.

### OPTICAL/REFLECTOR

Hydroformed and polished aluminum reflector.

### BALLAST

- CF: electronic thermally protected high power factor
- HID: electronic thermally protected or magnetic
- LED: solid state electronic driver

### SOCKET

- CF: four pin plug in type
- HID: 4KV pulse rated medium base



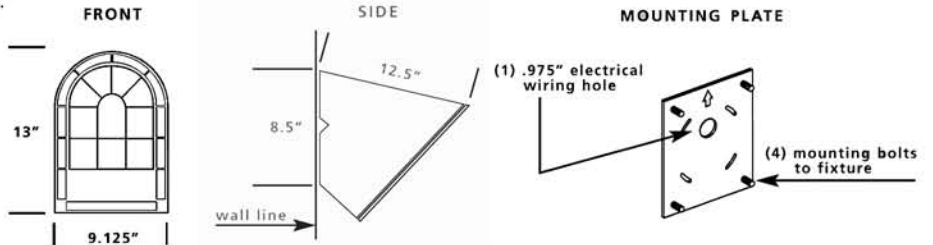
### FINISH/COLOR

Polyester powder coat over zinc based primer. Available in matte black (MB), matte bronze (BZ), matte white (MW), silver gray (SG), or custom color (CC).

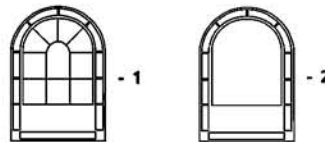
### OPTIONS

- F1 single fuse
- PC photo cell
- ETR emergency ballast remote only (CFL)
- CF color filters (CF and LED only)

ETL listed suitable for wet location.  
Conforms to UL Standard 1598.



### FRAME OPTIONS



Series	Lamp	Wattage/MAX
500	PLT	2/42W
	MH/HPS	100W
	LED	18W

### Ordering Example

500 - 1 - 26PLCE - 120 - MB - F1, ETR

Specifications are subject to change without notice. Consult factory for verification.

## ELCAST LIGHTING

815 S KAY AVE ADDISON, IL 60101 USA  
630.543.5390 • FAX: 630.543.5392  
elcastltg@elcastltg.com • www.elcastltg.com