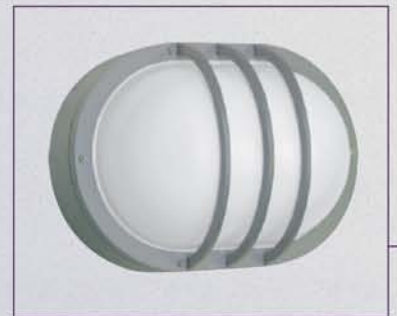


400 Series

ELCAST
LIGHTING



400-2



Catalog Number	
Project/Location	Type
Approved By	

400 SERIES

LED, CFL ARCHITECTURAL WALL/CEILING MOUNT BULK HEAD

HOUSING

Heavy-duty, corrosion resistant die-cast aluminum housing and die-cast frames. See below for die-cast frame option.

LENS

One-piece, molded opal white, impact resistant UV-stabilized polycarbonate or frosted glass. Lens shall be retained to fixture housing using tamper resistant stainless steel fasteners.

GASKET

Closed cell silicone foam gasket. Seals out moisture, dust, and insects for weather-tight operation.

BALLAST

- CF: electronic, thermally protected high power factor
- HID: electronic, thermally protected high power factor or magnetic core & coil
- LED: solid state electronic driver

SOCKET

- CF: four pin plug-in type
- HID: G12 BI-PIN 4KV pulse rated or 4KV pulse rated nickel shell medium base

MOUNTING

Surface wall or ceiling mount over standard J-box.

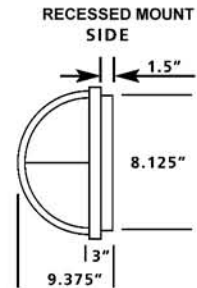
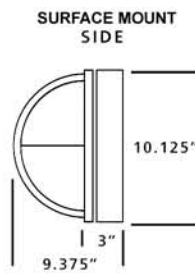
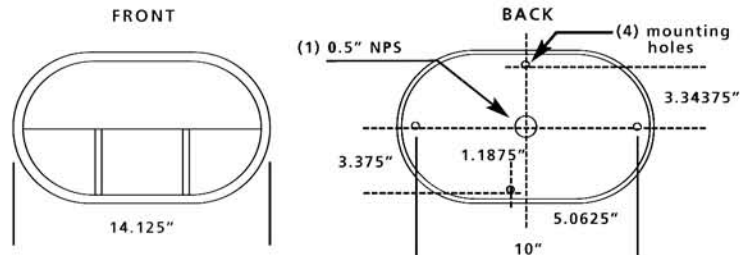
FINISH/COLOR

Polyester powder coat over zinc based primer. Available in matte black (MB), matte bronze (BZ), matte white (MW), silver gray (SG), or custom color (CC).

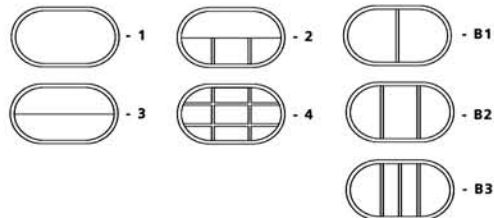
OPTIONS

- F1 single fuse
- QRS quartz re-strike
- PC photo cell
- ETR emergency ballast remote (CFL only)
- ETI emergency ballast integral (2/26W MAX CFL only)
- G/P glass or polycarbonate
- R recessed mount

ETL listed suitable for wet location.
Conforms to UL Standard 1598.



FRAME OPTIONS



Series	Lamp	Wattage/MAX
400	PLT	2/42W
	PSMH	125W
	HPS	100W
	LED	21W

Ordering Example



Specifications are subject to change without notice. Consult factory for verification.