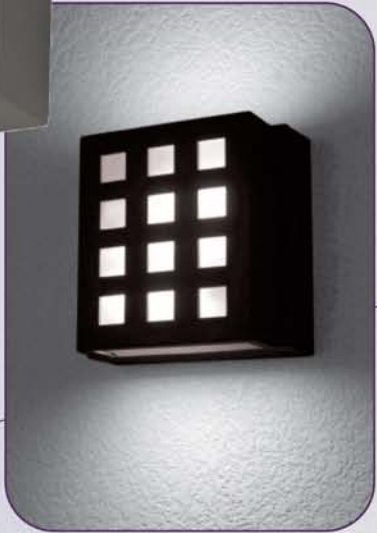


# 2400 Series





# 2400 SERIES

Catalog Number	
Project/Location	Type
Approved By	

## LED, HID, CFL WALL MOUNT LUMINAIRE

### APPLICATION

Wall mount luminaire for exterior and interior applications. Designed for commercial and residential applications where performance, flexibility, and elegance are required.

### HOUSING

One-piece, heavy-duty corrosion resistant die-cast aluminum.

### FRAMES

One-piece, heavy-duty corrosion resistant die-cast aluminum. Secures to housing with stainless steel tamper proof hardware.

### LENS & GASKETING

One-piece, molded frosted glass lens. Closed cell-silicone foam gasket seals out moisture, dust, and insects for weather-tight operation.

### BALLAST

CF: electronic, thermally protected high power factor  
 HID: electronic, thermally protected  
 LED: solid state electronic driver

### SOCKET

CF: four pin plug-in type  
 HID: G12 BI-PIN 4KV pulse rated

### MOUNTING

Surface over standard J-box.

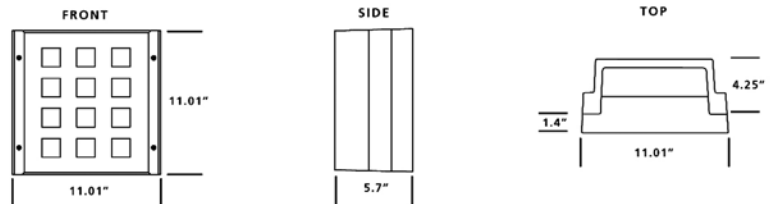
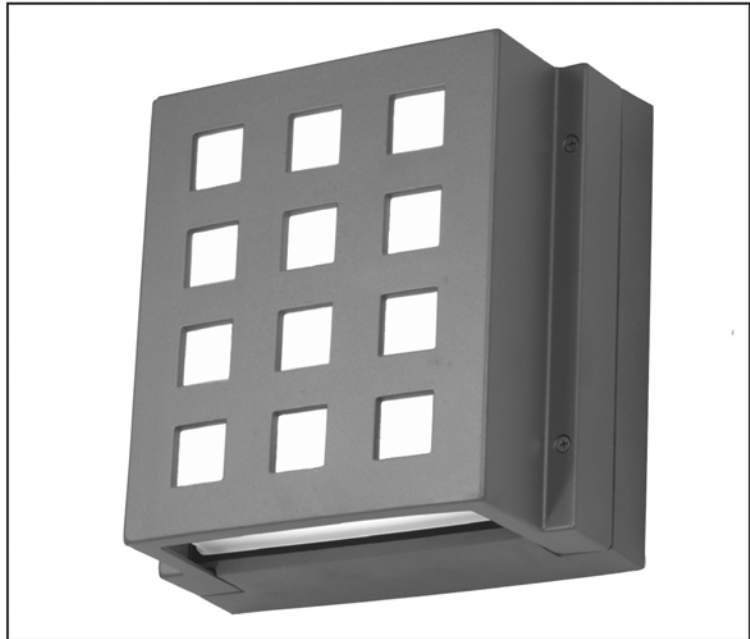
### FINISH/COLOR

Polyester powder coat over zinc based primer. Available in matte black (MB), matte bronze (BZ), matte white (MW), silver gray (SG), or custom color(CC).

### OPTIONS

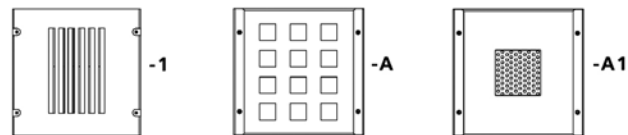
CF color filters  
 F1 single fuse  
 ETR emergency ballast remote only (CFL)

Suitable for wet location.  
 Conforms to UL Standard 1598.



Series	Lamp	Wattage/MAX
2400	PLC	2/26W
	MH	70W
	LED	12W

### FRAME OPTIONS



### Ordering Example

2400 - A - 70MH - 120 - SG - TP

## ELCAST LIGHTING

815 S KAY AVE ADDISON, IL 60101 USA  
 630.543.5390 • FAX: 630.543.5392  
[elcastltg@elcastltg.com](mailto:elcastltg@elcastltg.com) • [www.elcastltg.com](http://www.elcastltg.com)