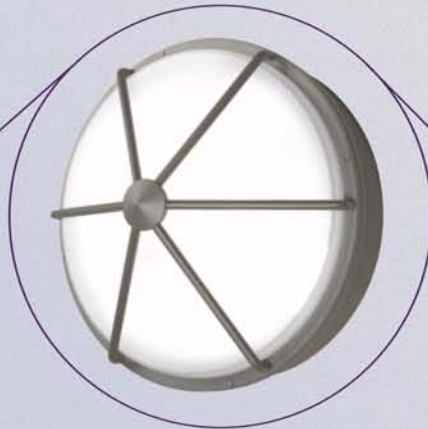
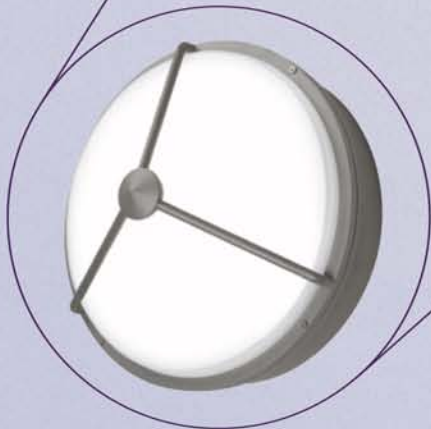
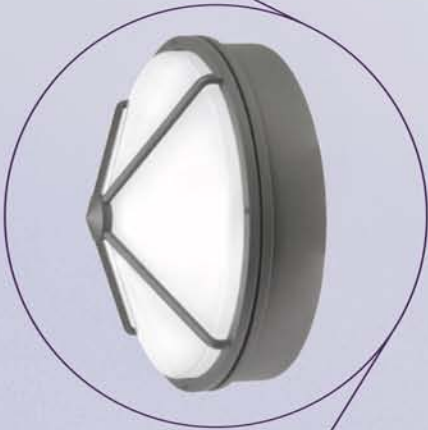
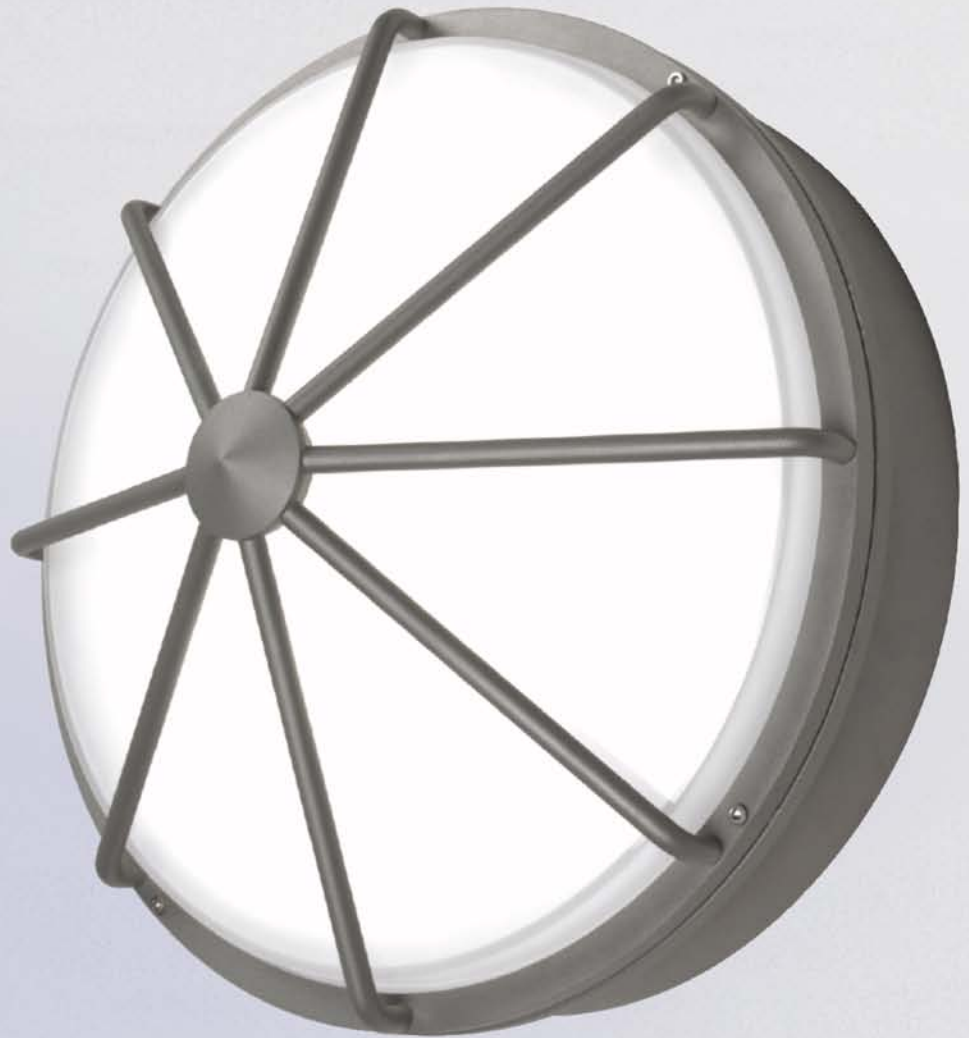


110C Series

ELCAST
LIGHTING





Catalog Number	
Project/Location	Type
Approved By	

110 C SERIES

LED, HID, CFL ARCHITECTURAL WALL/CEILING MOUNT

HOUSING

Heavy-duty, corrosion resistant die-cast aluminum housing. Housing and decorative frames. Stainless steel tamper proof hardware.

GASKET

Closed cell silicone foam gasket seals out moisture, dust, and insects for weather-tight operation.

LENS

One-piece, molded frosted glass.

BALLAST

- CF: electronic, thermally protected high power factor
- HID: electronic, thermally protected or magnetic core and coil
- LED: solid state electronic driver

SOCKET

- CF: four pin plug-in type
- HID: 4KV pulse rated nickel-plated shell medium base

MOUNTING

Surface wall or ceiling over standard J-box.

FINISH/COLOR

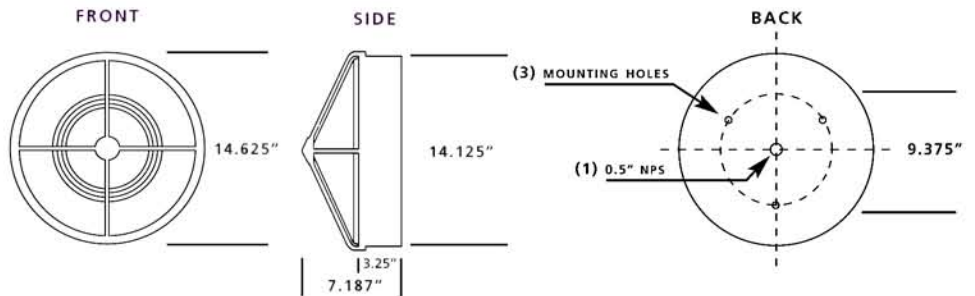
Polyester powder coat finish over zinc based primer. Available in matte black (MB), matte bronze (BZ), matte white (MW), silver gray (SG), or custom color (CC).

OPTIONS

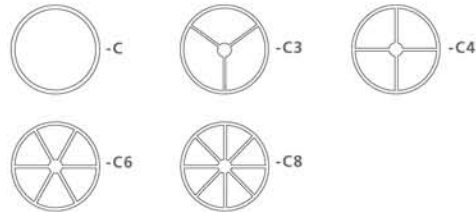
- F1 single fuse
- PC photo cell
- QRS quartz re-strike
- ETR emergency ballast remote (CFL)
- ETI emergency ballast integral (CFL)
- ETBP extreme temperature battery pack
- CM ceiling mount
- R recessed

ETL listed suitable for wet location. Conforms to UL Standard 1598.

Series	Lamp	Wattage/MAX
110C	2/PLC	42W
	HPS	100W
	PSMH	100W
	LED	21W



FRAME OPTIONS



Ordering Example



ELCAST LIGHTING

815 S KAY AVE ADDISON, IL 60101 USA

630.543.5390 • FAX: 630.543.5392

elcastltg@elcastltg.com • www.elcastltg.com

Specifications are subject to change without notice. Consult factory for verification.